

# Traffic Accounts

*Welcome*

FA & CAO

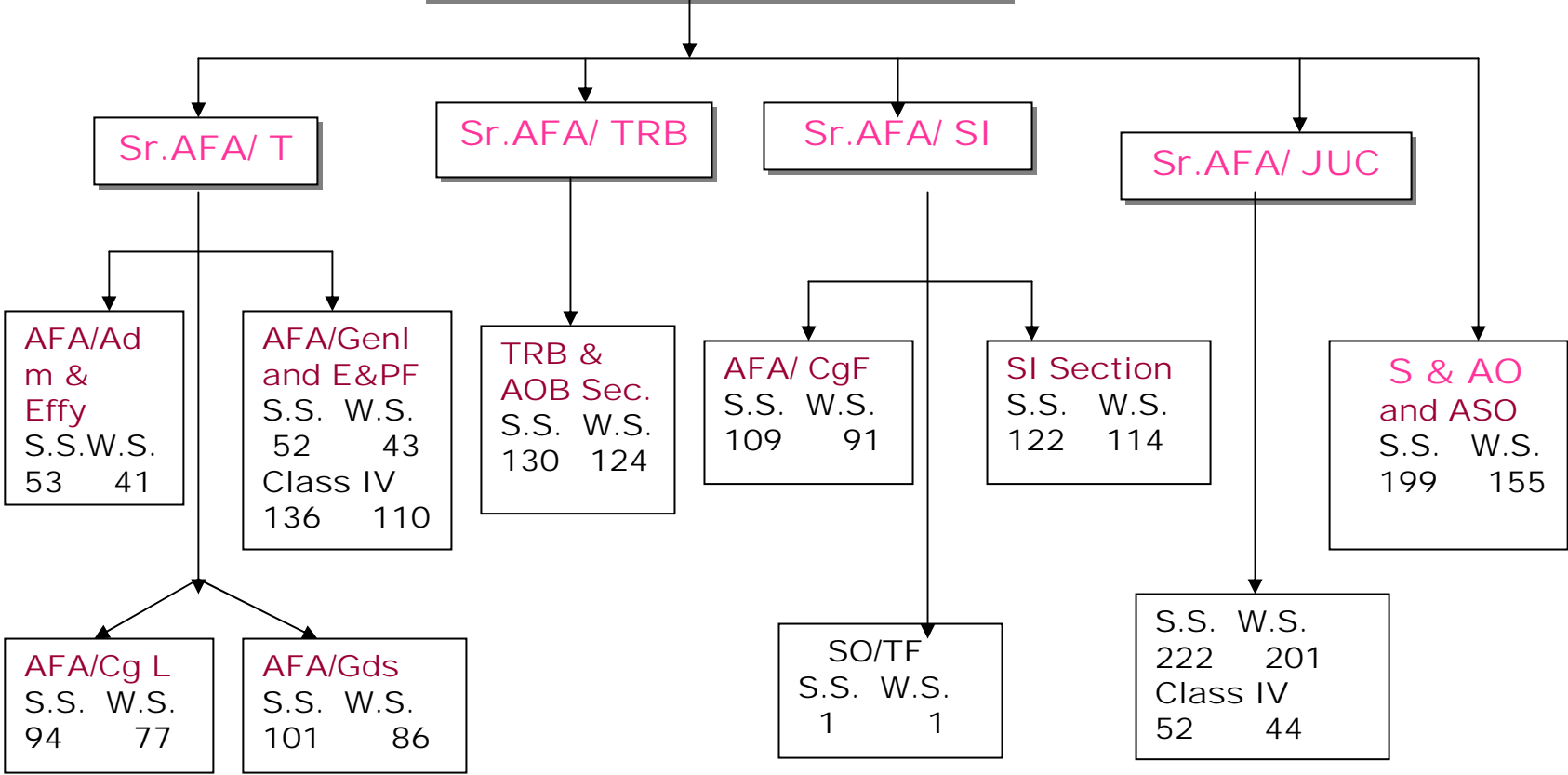
# Role of Traffic Accounts

- Correct Accountal of Traffic Earnings.
- Emphasis on Accuracy through Internal Check.
- Realization of Railway Dues.

# Function of Traffic Accounts

- That the Entity to whom Service is rendered pays the proper amount.
- That the Railway servant receiving payment correctly accounts for the same.
- That if more than one Railway renders the service, proper distribution of earnings is done.
- That collection of vouchers & raising of debits to concerned department.

Dy.C.A.O./Traffic  
S.S. 1271      W.S. 1087



# Functions of Goods Section

- Internal Check of Invoices.
- Preparation of 7-A Statement.
- MPAs.
- Updation of Apportionment Master.
- Apportionment of Goods Earnings
- Accountal of Hire & Penalty Charges.

- Check of Demurrage/ Wfg, Re-weighment, Siding & Shunting Returns.
- Checking & Passing of Out-Agency Bills.
- Refund of Excess Freight.
- Billing of RMC Goods Traffic.
- Settlement Cases (NOC).

# Coaching Section

- Check of
  - ❖ Ticket Indents.
  - ❖ Passenger Classification.
  - ❖ BPT, EFT & MST Returns.
  - ❖ UTS/ PRS Returns.
  - ❖ Non-Issued/ ROPD Tickets
- Refund – Passenger, Special Train.



- Raising of Bills against Rajya Sabha, Lok Sabha & Vidhan Sabha & Postal Deptt.
- Payment of Pilgrim Tax.
- Updation of Apportionment Master.
- Apportionment of Passenger Earnings.
- Settlement Cases related to Commercial Department.
- Obsolete Tickets.

# Parcel Section

## ➤ Check of

- ❖ Parcel Weigh Bills.
- ❖ Cartage Bills.
- ❖ Re-Weighment statement.
- ❖ Wharfage Returns.

# Traffic Book Section

- Preparation of Cash Register.
- Checking of Balance Sheet (Goods & Coaching).
- Preparation of Traffic Book.
- Preparation of Account Current.
- Advance Statement of Gross Earnings.
- Traffic Suspense.
- Preparation of Abstract Z.

# AOB Section

- Preparation of Voucher Register.
- Preparation of Accounts Office Balance Sheet.
- Checking & Billing of Military Warrants, Police & Para-military Vouchers, HOR.
- Realization of Outstanding Dues against Central/State Govt., PSU & Private Companies.

# Station Inspection Section

- Regular Inspection of Stations to check the Basic Records from which Monthly/ Periodical Returns/ Reports are prepared which are audited by the Accounts office.
- Timely submission of Inspection Reports.
- Pointing out Irregularities to Commercial Authorities.

➤ To Check/ See -

❖ Proper Accountal of Earning & Timely Submission of Cash & Vouchers and Returns by Station.

❖ Proper Maintenance of Records at Station

❖ Any Assistance required by Station Staff in reference to Rules & Procedures.

➤ Coordination with other Section

# Statistical Branch

- Coding of Invoices, CTR & BPT.
- Allotment of new numerical code.
- Statistical statements related to Operating/Commercial
  - ❖ Monthly Evaluation Report
  - ❖ Passenger train performance
  - ❖ Goods train performance
  - ❖ Parcel & Luggage statistics
  - ❖ Commodity-wise statistics
- Monthly Booklet for G.M.

# Misc. Work

- Financial scrutiny of Traffic Finance proposals.
- Transfer/Posting, Promotion of Group D & all Group C staff except S.Os.
- Preparation & passing of Salary bills.
- Maintenance of PF account & Fixation of Pension.
- All D&AR and Legal/Court cases.
- Audit cases



# 1. Passengers Earnings

For the month {Rs./Lacs}

Month	ORIGINATING			APPORTIONED		
	Target	Actual	%age Variation	Target	Actual	%age Variation
Apr.09	42308	38319	-9.42	28275	24130	-14.66
May 09	42302	39059	-7.67	29004	27288	-5.92
Jun.09	37701	38718	2.70	26427	27116	2.61
Jul.09	36961	41881	13.31	26491	28318	6.90
Aug.09	38981	37672	-3.36	25953	22245	-14.29
Sep.09	36209	36999	2.18	24753	22078	-10.81
Oct.09	37054	39814	7.44	23134	25710	11.14
Nov.09	39834	39363	-1.18	25770	26017	0.96
Dec.09	36755	37395	1.74	24930	24465	-1.86
Jan.10	36520	35852	-1.83	28424	24486	-13.85
Feb.10	36011			25672	24877 <sub>app</sub>	-3.09
Mar.10	50775			28424		

## 2. Other Coaching Earnings

For the month {Rs./Lacs}

Month	ORIGINATING			APPORTIONED		
	Target	Actual	%age Variation	Target	Actual	%age Variation
Apr.09	4817	4406	-8.53	4379	3438	-21.49
May 09	5529	4676	-15.42	4501	3754	-16.60
Jun.09	5261	4661	-11.40	3985	3929	-1.41
Jul.09	5031	4168	-17.15	4666	3444	-26.19
Aug.09	4257	4866	14.31	4673	3616	-22.62
Sep.09	5052	4494	-11.05	4981	3832	-23.07
Oct.09	6196	4600	-25.76	4954	4080	-17.64
Nov.09	5374	4542	-15.48	4997	3786	-24.23
Dec.09	5998	5229	-12.82	4985	4433	-11.07
Jan.10	4556	5109	12.14	5893	3811	-35.33
Feb.10	5478			5322	3570 <sub>app</sub>	-32.92
Mar.10	4951			5893		

### 3. Goods Earnings

For the month

{Rs./Lacs}

Month	ORIGINATING			APPORTIONED		
	Target	Actual	%age Variation	Target	Actual	%age Variation
Apr.09	33705	33760	0.16	30908	35570	15.08
May 09	30099	26044	-13.47	32927	32232	-2.11
Jun.09	33715	26492	-21.42	27985	32982	17.86
Jul.09	24687	32957	33.50	30793	37820	22.82
Aug.09	27534	33261	20.80	30928	36232	17.15
Sep.09	31455	37397	18.89	31121	32762	5.27
Oct.09	25569	35981	40.72	31861	34246	7.49
Nov.09	28186	36084	28.02	31494	40681	29.17
Dec.09	35051	35731	1.94	32568	42264	29.77
Jan.10	37985	36697	-3.39	34523	41676	20.72
Feb.10	35817			31183	39235 <sub>app</sub>	25.82
Mar.10	41197			34523		

## 4. Sundry Earnings

For the month {Rs./Lacs}

Month	ORIGINATING			APPORTIONED		
	Target	Actual	%age Variation	Target	Actual	%age Variation
Apr.09	504	610	21.03	639	979	53.21
May 09	536	542	1.12	1063	1295	21.82
Jun.09	425	1676	294.35	1481	2481	67.52
Jul.09	1786	2437	36.45	1234	1028	-16.69
Aug.09	2412	1234	-48.84	1278	946	-25.98
Sep.09	453	810	78.81	8037	5008	-37.69
Oct.09	6930	5040	-27.27	3693	14074	281.10
Nov.09	1729	14235	723.31	997	1281	28.49
Dec.09	4711	1205	-74.42	1678	3132	86.65
Jan.10	3401	3056	-10.14	3131	4992	59.44
Feb.10	6632			9526	9000app	-5.52
Mar.10	45480			39980		

## 5. Gross Earnings

For the month {Rs./Lacs}

Month	ORIGINATING			APPORTIONED		
	Target	Actual	%age Variation	Target	Actual	%age Variation
Apr.09	81335	77094	-5.21	64201	64117	-0.13
May 09	78466	70322	-10.38	67495	64569	-4.34
Jun.09	77101	71548	-7.20	59878	66508	11.07
Jul.09	68465	81444	18.96	63184	70610	11.75
Aug.09	73185	77033	5.26	62832	63039	0.33
Sep.09	73170	79700	8.92	68892	63680	-7.57
Oct.09	75749	85435	12.79	63642	78110	22.73
Nov.09	75123	94223	25.43	63258	71765	13.45
Dec.09	82516	79560	-3.58	64161	74294	15.79
Jan.10	82463	80714	-2.12	71971	74965	4.16
Feb.10	83938			71703	76682app	6.94
Mar.10	142404			108820		

# Traffic Suspense

upto the month of Dec.09 {Rs./Lacs}

Particulars	Opening Balance Apr.09	Accretion/ Clearance	Closing Balance Dec.09	Closing Balance Dec.08
Station Outstanding	75521	14777	90298	87997
Accounts office B/Sheet	1007	3632	4639	4639
Cash in Transit	0	4205	4205	6150
Account to Adjust	0	2498	2498	3348
Demand Rec.	1724	2485	4209	1724
T.W.F.A.	1796	0	1796	1796
Grand Total	80048	27597	107645	105654

# Major outstandings

upto Dec'09 {Rs./Crs.}

Party Name	Opening Balance as on 01.04.09	Accretion/ Clearance	Closing Balance as on 31.12.09
D.V.B.	177.20	-0.21	176.99
HSEB/PN P	0.00	10.65	10.65
NTPC	8.13	-3.68	4.45
PSEB	456.11	23.98	480.09
Malvika Steel	67.17	0.00	67.17

# Goods Loading Performance

upto the month of Jan.10

Particulars	LOADING in MT		EARNINGS in Cr.	
	Target	Actual	Upto Jan.09	Upto Jan.10
IRON & STEEL	0.11	0.02	1.91	1.16
CEMENT	2.44	2.08	75.62	75.62
FOOD GRAINS	11.77	14.55	1483.91	1943.18
FERTILIZER	5.52	5.65	212.54	249.81
P.O.L.	4.75	5.29	298.40	363.65
CONTAINER	4.65	5.53	542.73	608.05
OTHERS	4.39	3.69	171.52	195.50
Grand Total	33.63	36.81	2786.63	3432.99



# Position of AUDIT CASES

as on 28.02.10

Items	Opening Balance	Accretion	Clearance	Closing Balance
Audit Note	17	40	35 8	22
Inspection Reports	90	36	60 35	66
Special Letters	8	1	9 5	Nil
Draft Para	1	3	3	1
Provisional Para	1	0	1	Nil
Audit Para	2	6	8	Nil

# Position of D&AR CASES

Opening Balance as on 01.04.09	New Cases	Closed Cases	Balance as on 28.02.10
08	05	07	06

# Position of COURT CASES

Opening Balance as on 01.04.09	New Cases	Closed Cases	Balance as on 28.02.10
37	01	11	27

# Achievements of 2008-09

- Timely payment of 6<sup>th</sup> Pay Commission Arrears.
- Raising of Rs.308 crores debits on account of Diverted traffic.
- Clearance of old Outstanding of Rs.70.58crs against BTPS.
- Raising & realization of debits to the tune of Rs.502 crores from Govt. departments.

- Due to review of Goods Apportionment Master, earnings increased by Rs. 20.88 crs.
- Saving of Rs.1.20 crs while processing refund of excess freight.
- Recovery of a debit of Rs.1.37 crores raised by TIA at Amausi station of LKO Division has been started.

# Achievements of 2009-10

- A booklet of financial results & statistical highlights of 2006-07 to 2008-09 was published.
- Yearly reconciliation of PF done without difference for 2008-09.
- PF balances reconciled with books upto Feb'10.
- TA/NDLS was the first unit to submit the NPS data upto July'09 in electronic form to NSDL. Data is ready upto Feb'10.

- Income tax returns of 2008-09 prepared by the staff & returns of all 4 quarters sent to Income Tax deptt.
- Income tax returns of 3 quarters of 2009-10 prepared by the staff & Submitted to I.T Deptt. In Mar 2010
- Raising & realization of debits to the tune of Rs311.82 crores upto Feb'10 from Govt. departments.
- Raising of Rs.342.91 crores debits on account of Diverted traffic.

- Debit of Rs.2.54crs raised & realized from CONCOR. (Dev. Surcharge)
- Use of TMS data in electronic form. This has resulted in saving of time at EDP Centre. Further, this has removed the punching errors.
- Till now, only ISO/TKD was providing data in electronic form. On being pressed upon, from Nov'09 onwards, CONCOR has started providing data in electronic form for all locations.

- Intensive check by TIAs at JUC Station, resulting in collection of Rs.2.77 lacs from ticket less travelers in 8 hrs.
- Intensive check by TIAs at UMB Station on 27-03-10, resulting in collection of Rs.180 lacs form ticket less travelers in 8 hrs.



- Due to special efforts of TIAs, Rs.32.41 crs. of outstanding has been cleared upto Feb'10
- Saving of Rs.31 lacs while processing refund of excess freight up 28-02-2010.
- During the period from 01-04-09 to 28-02-10, 35 Audit Notes, 60 Audit Inspection Report & 9 Special Letters were cleared out of which 8 Audit Notes, 35 Inspection Reports & 4 Special Letter were over one year old.

# Future Planning

- Budgetary offer has been obtained from M/s Exlant, Bangalore for implementation of AFRES/PRIME at TA/NDLS.
- Operationalisation of a new program developed for Voucher register.
- Program is to be developed for matching I.W. haulage charges with details provided with the cheque.

# Assistance Required

- Connectivity of PRS & TMS terminals at TA office.
- Computer training of Staff in Core areas.
- Infrastructure required.
- Coordination with Commercial & Operating Authorities.

**Thanks**