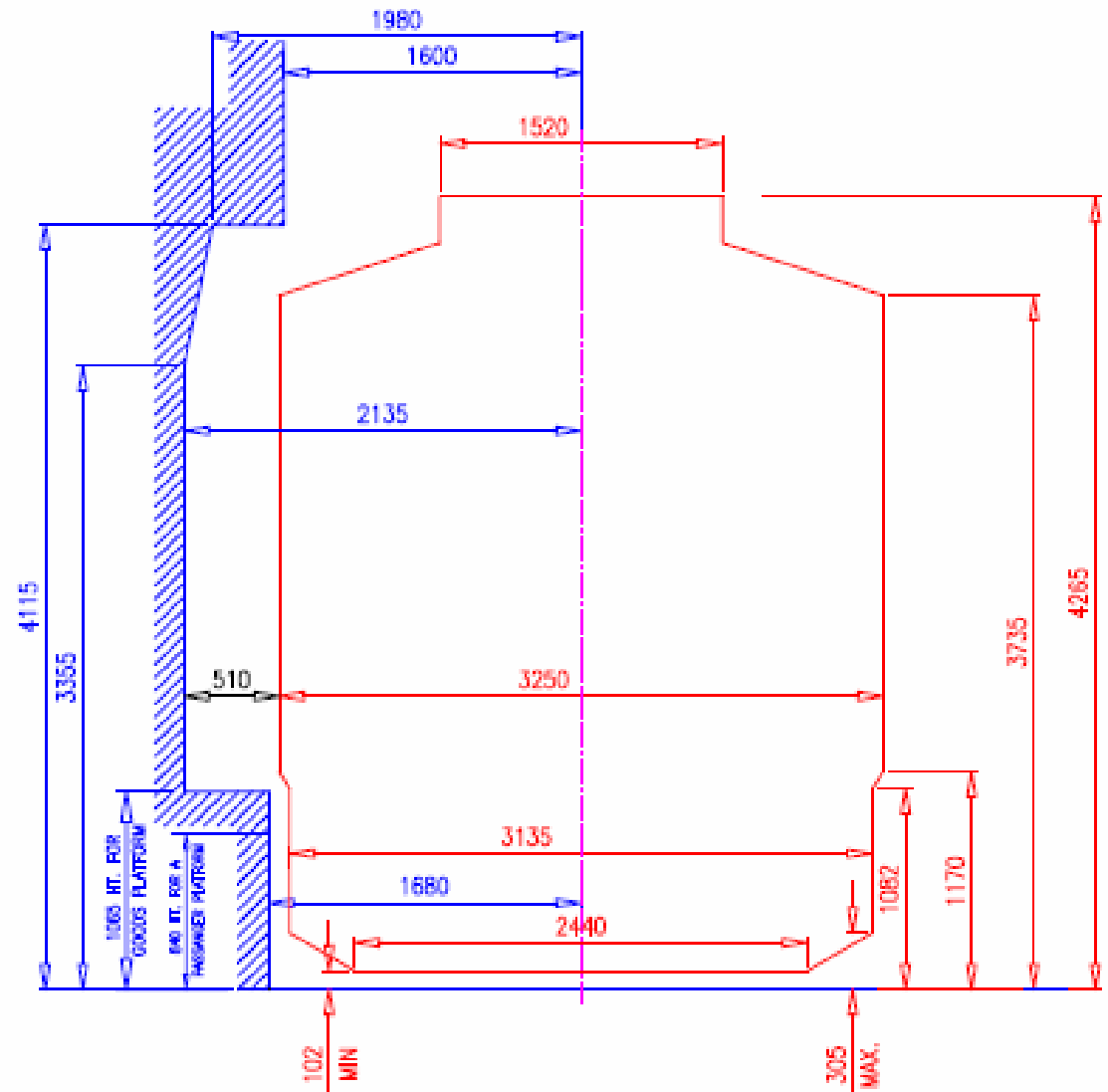


# Door Design & MMD Issues BCNHL Wagon

# Genesis of Door : MMD

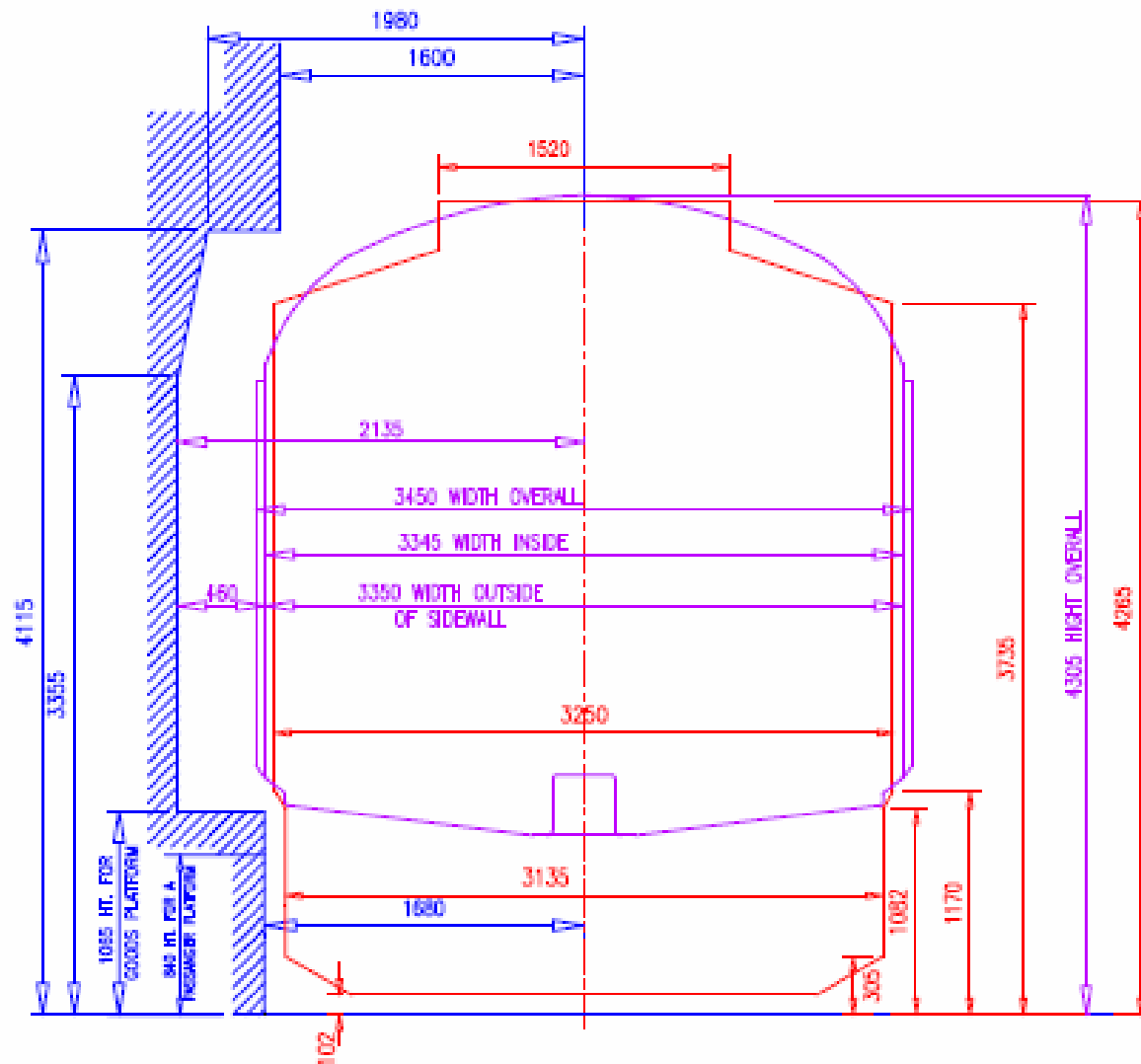


● MMD-1D-2004

● FIXED STRUCTURE

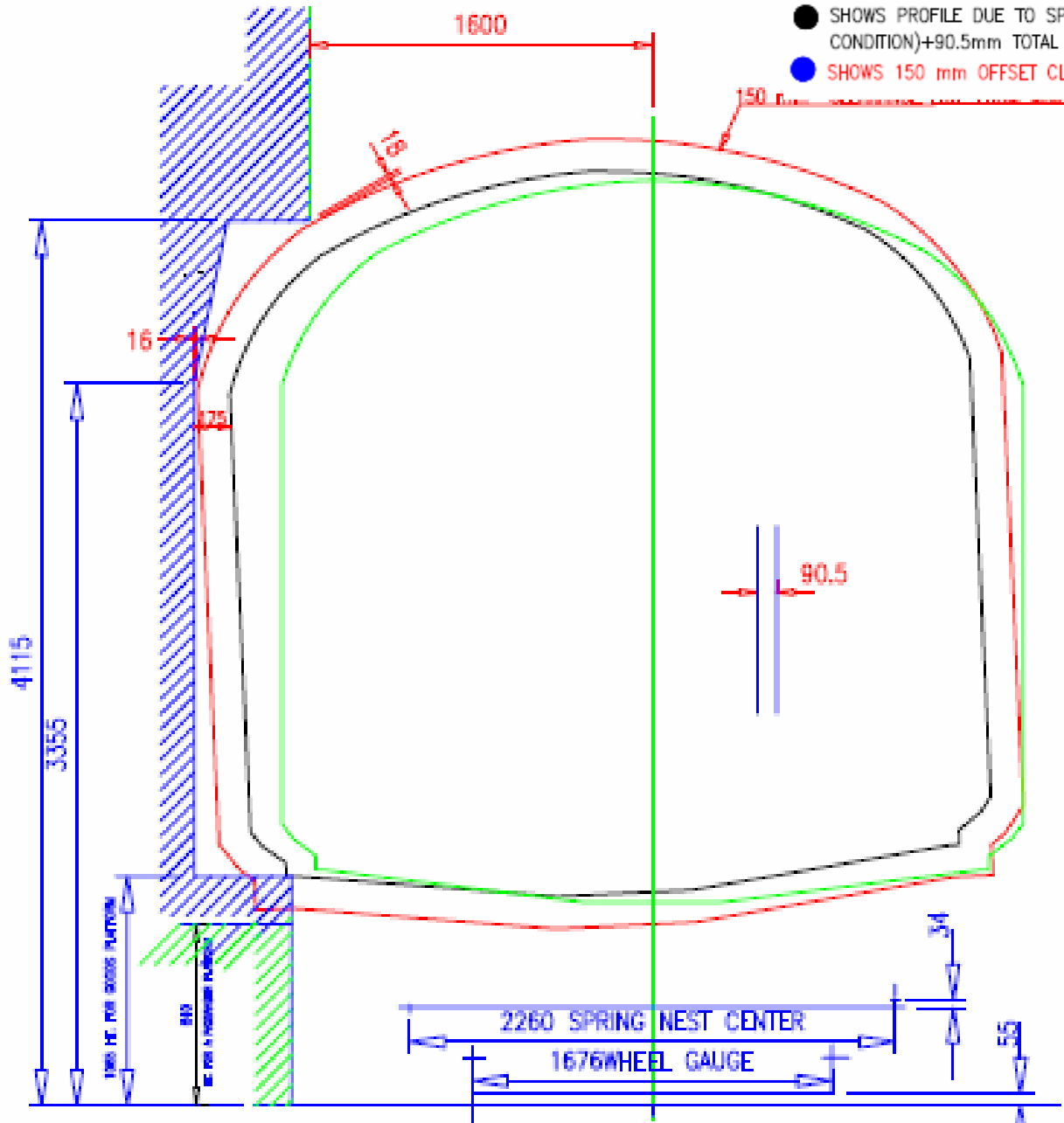
# BCHHL WAGON WITH M.M.D.-1D-2004 & FIXED STRUCTURE

## MMD & BCNHL



- SHOWS PROFILE OF EXISTING 'BCNHL WAGON' IN STATIC CONDITION(EMPTY)
- MMD-1D-2004
- FIXED STRUCTURE

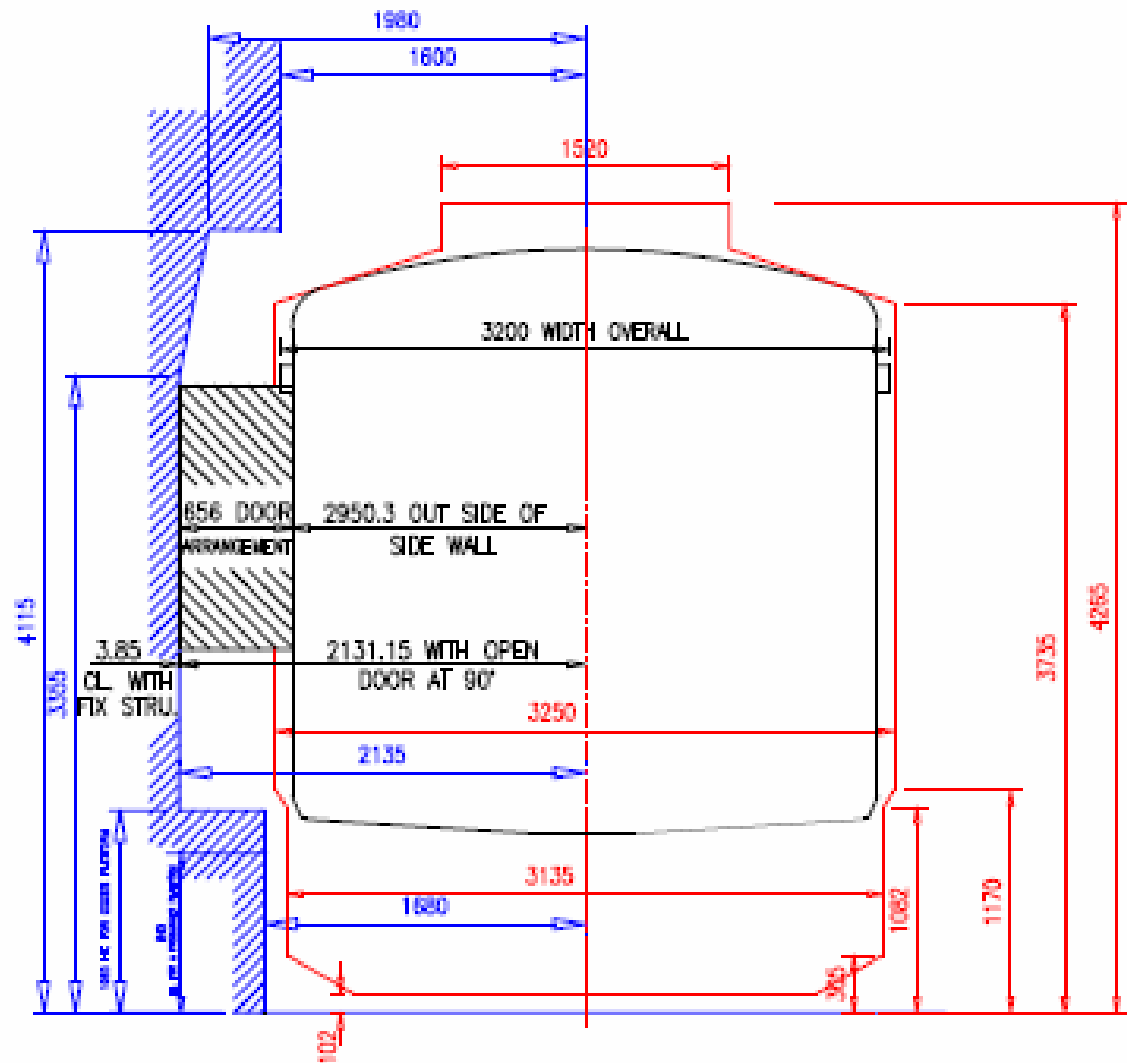
- SHOWS PROFILE IN STATIC CONDITION.
- SHOWS PROFILE DUE TO SPRING VARIATION(ONE NEST HOME OTHER IN NEW CONDITION)+90.5mm TOTAL LATERAL SHIFTING OF WAGON
- SHOWS 150 mm OFFSET CLEARANCE LINE FROM FINAL PROFILE(INCLUDING LATERAL SHIFTING)



# Kinematic Profile & Fixed Structure - BCNHL

OPEN DOOR BCNA WAGON WITH M.M.D.-1D-2004  
& FIXED STRUCTURE

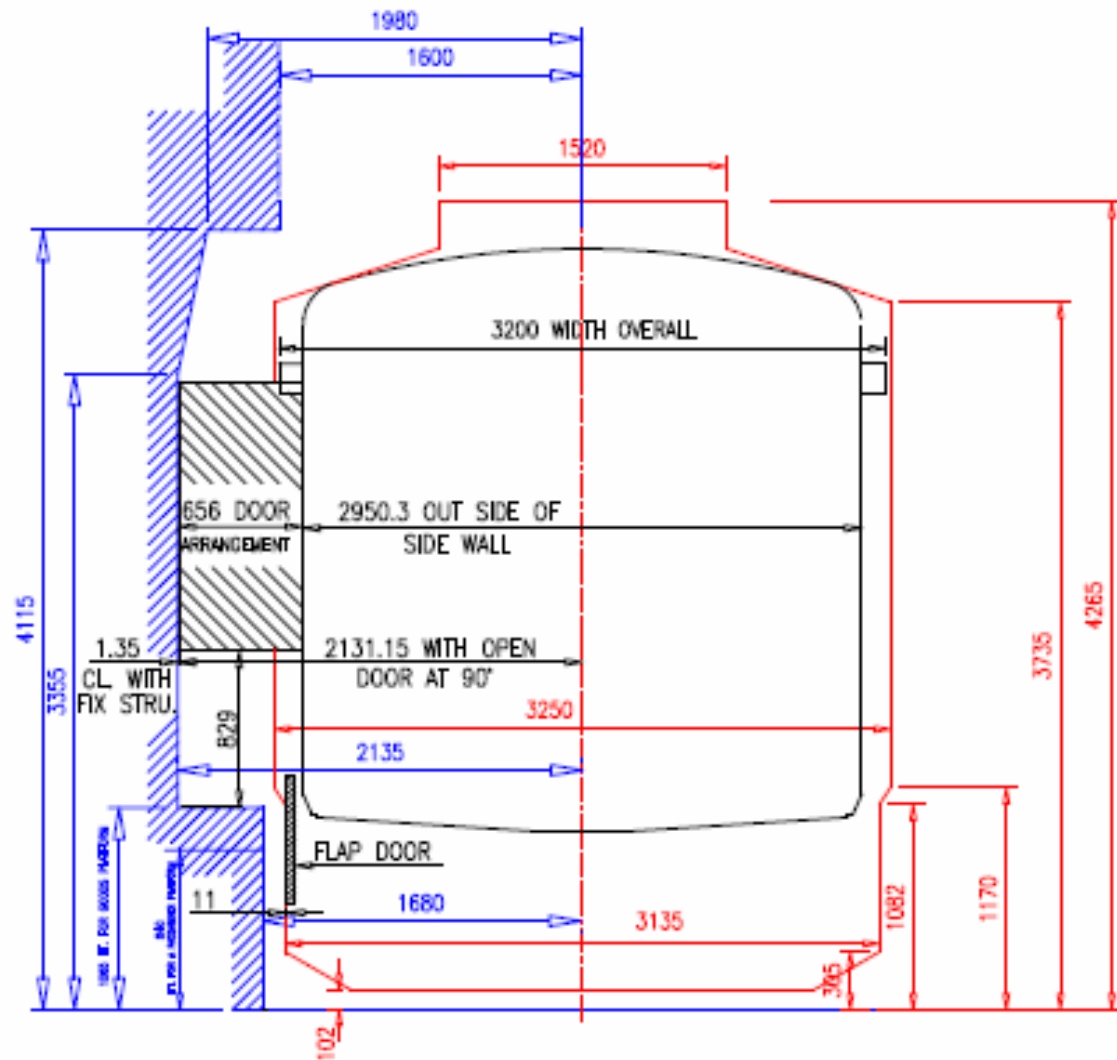
# MMD & BCNA



- SHOWS PROFILE OF 'BCNA WAGON' IN STATIC CONDITION(WITH OPEN DOOR)
- MMD-1D-2004
- FIXED STRUCTURE

OPEN DOOR BCNA WAGON WITH M.M.D.-1D-2004  
& FIXED STRUCTURE

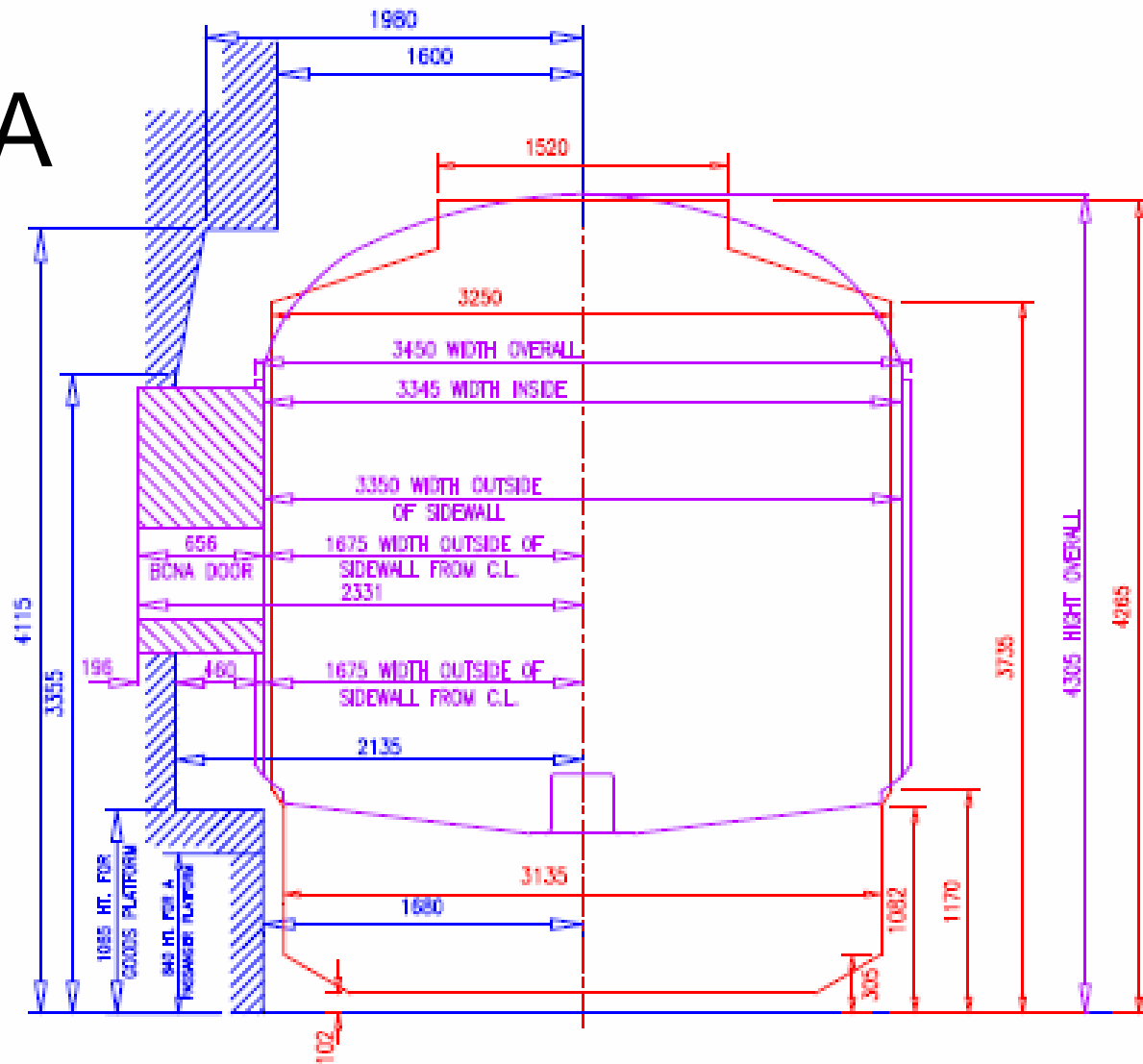
MMD  
&  
BCNA  
(Open  
Doors)



- SHOWS PROFILE OF 'BCNA WAGON' IN STATIC CONDITION(WITH OPEN DOOR)
- MMD-1D-2004
- FIXED STRUCTURE

BCHHL WAGON WITH BCNA DOOR SHOWN WITH M.M.D-1D-2004 & FIXED STRUCTURE

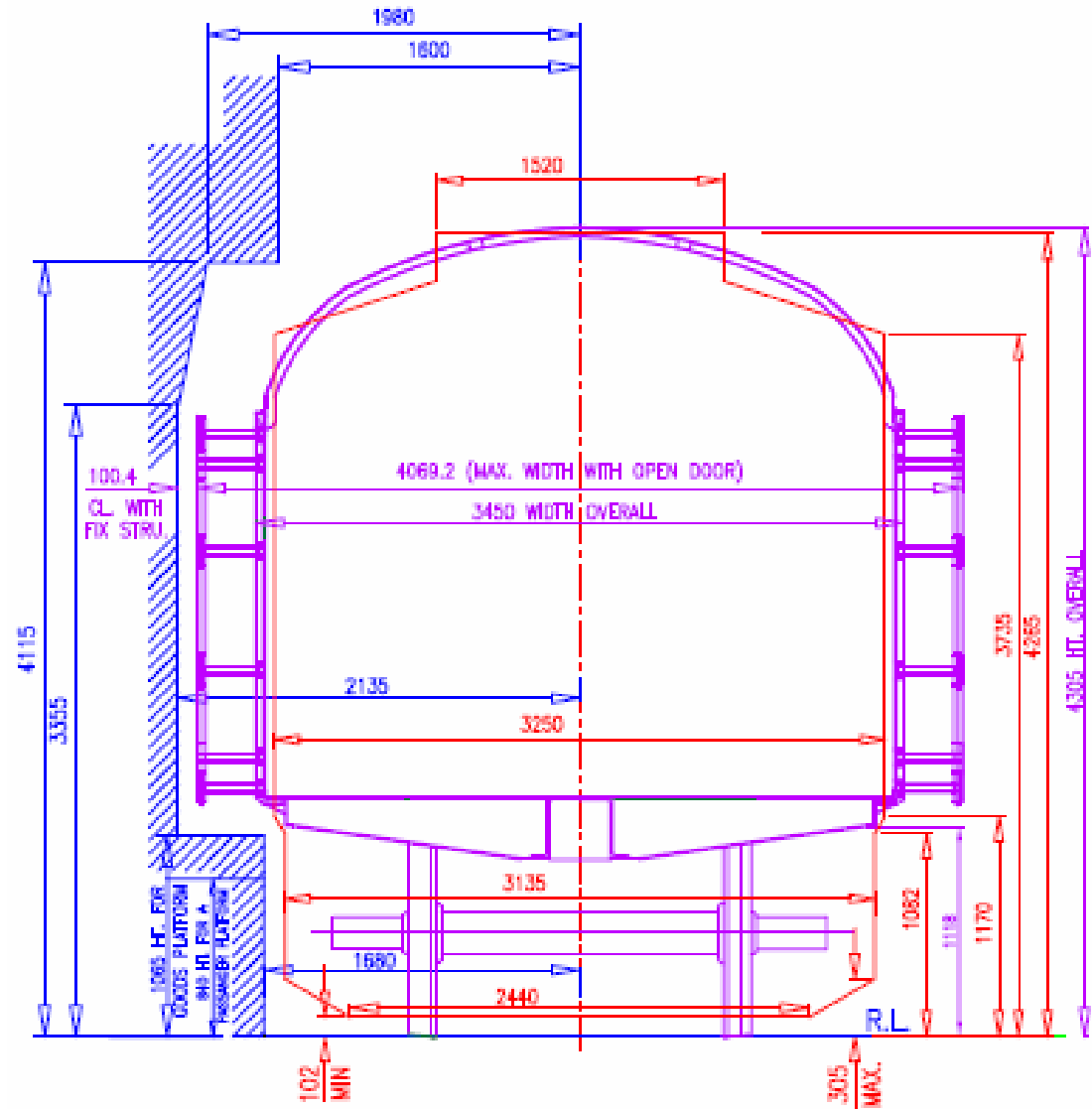
**BCNHL  
with BCNA  
door**



- SHOWS PROFILE OF EXISTING 'BCNHL WAGON' WITH BCNA DOOR
- M.M.D-1D-2004
- FIXED STRUCTURE

OPEN DOOR BCHHL WAGON WITH MMD-1D-2004 & FIXED STRUCTURE

# MMD & BCNHL



- SHOWS PROFILE OF EXISTING 'BCNHL WAGON' IN STATIC CONDITION WITH OPEN DOOR
- MMD-1D-2004
- FIXED STRUCTURE



# Comparison of Door design

Description	BCNA	BCNHL
Door per Wagon	4 nos.	4 nos.
Basic Design Type	2 hinge, 1 Flap	2 Swing-Side
Door opening width	1204 mm	1204mm
Door opening height	1985 mm	1985 mm
Door height	2030 mm	2060 mm
<b>Weight / Door</b>	149.5 kg (2 * 49.4 + 50.7)	<u>208.5 kg</u> (2 * 104.25)